



VMAX Plus4 Series

The VMAX Plus4 Series is the perfect solution to large room projection applications.
www.elitescreens.com/vmaxp4



VMAX Plus4 Series



The VMAX Plus4 Series is the perfect solution to large room projection applications.

Screen Material:

- MaxWhite Plus 1.1 Gain Screen Material is an ultra wide 5M seamless screen material for large projection screen applications.
- 160 degree wide viewing angle for large commercial applications
- Black backed screen material eliminates light penetration for superior color reproduction
- Black masking enhances picture contrast

Housing Finish and Installation:

- Suitable for ceiling installations
- Ships fully assembled with 3-prong power connection ready to Plug & Play
- Side-access panel with sliding motor allows easy "in-place" maintenance without dismounting the screen

Flatness Treatment & Motor System:

- Fiberglass-backed material has added flatness
- Tubular motor allows swift operation with a superior weight tolerance and operational lifespan

Control System:

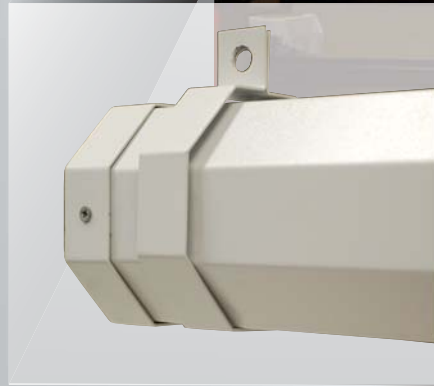
- Infrared & Radio Frequency remotes and wall switch
- Internal IR/RF low voltage receivers
- 5-12 volt trigger synchronizes with projector
- Optional In-wall up/down switch and wireless 5-12V controls available

Quality and Reliability:

- Standard 2-year parts and labor warranty
- 3-year warranty for GEMR (Government, Education, Military and Religious) - US only
- ETL, FCC, CE, CB GOSTCE & ISO9001:2008 Certified



Easy Maintenance - Side-Slide Motor and Circuit Board Access



Built-in Ceiling Bracket



RJ45 Connector

VMAX Plus3(4) Series: Large Size Electric/Motorized Screen with IR/RF Remote & In-Wall Switch/12V Trigger

Model	Nominal Diagonal	View Height (in)	View Width (in)	View Height (cm)	View Width (cm)	Net Weight (lbs)	Gross Weight (kgs)	Net Weight (lbs)	Gross Weight (kgs)	Packaging Dimension (LxHxW)	Gain	Screen Material	Case Color
VMAX200XWS PLUS4	200"(1:1)	141.0	141.0	358.1	358.1	105.8	230.6	48.0	104.6	164.5"x12"x13"	1.1	MaxWhite(Seam@TopBlack)	White
VMAX235XWS PLUS4	235"(1:1)	166.0	166.0	421.6	421.6	138.9	299.0	63.0	135.6	189.5"x12"x13"	1.1	MaxWhite(Seam@TopBlack)	White
VMAX180UWV PLUS4	180" (4:3)	108.0	144.0	274.3	365.8	53.4	67.7	24.2	30.7	158"x6.75"x6.75"	1.1	MaxWhite(Seamless)	Black
VMAX180XWV PLUS4	180" (4:3)	108.0	144.0	274.3	365.8	53.4	67.7	24.2	30.7	158"x6.75"x6.75"	1.1	MaxWhite(Seamless)	White
VMAX200UWV PLUS4	200"(4:3)	120.0	160.0	304.8	406.4	112.4	252.7	51.0	114.6	182.5"x12"x13"	1.1	MaxWhite(Seamless)	Black
VMAX200XWV PLUS4	200"(4:3)	120.0	160.0	304.8	406.4	112.4	252.7	51.0	114.6	182.5"x12"x13"	1.1	MaxWhite(Seamless)	White
VMAX235UWV PLUS4	235"(4:3)	140.3	187.0	356.4	475.0	151.9	325.2	68.9	147.5	212.5"x12"x13"	1.1	MaxWhite(Seam@TopBlack)	White
VMAX265UWV PLUS4	265"(4:3)	159.0	212.0	403.9	538.5	275.8	478.4	125.1	217.0	239.5"x13.3x14.5"	1.1	MaxWhite(Seam)	White
VMAX180XWH PLUS4	180"(16:9)	87.8	156.9	223.0	398.5	52.7	68.6	23.9	31.1	171"x6.75"x6.75"	1.1	MaxWhite(Seamless)	White
VMAX180UWH PLUS4	180"(16:9)	87.8	156.9	223.0	398.5	52.7	68.6	23.9	31.1	171"x6.75"x6.75"	1.1	MaxWhite(Seamless)	Black
VMAX200XWH PLUS4	200"(16:9)	98.0	174.0	248.9	442.0	118.1	265.0	53.6	120.2	197.6"x12"x13"	1.1	MaxWhite(Seamless)	White
VMAX235XWH PLUS4	235"(16:9)	115.4	205.0	293.1	520.7	148.4	333.3	67.3	151.2	229.9"x12.2"x13.4"	1.1	MaxWhite(Seam@TopBlack)	White
VMAX265XWH PLUS4*	265"(16:9)	130.0	231.0	330.2	586.7	282.2	482.8	128.0	219.0	256.5"x13.3"x14.5"	1.1	MaxWhite(Seam@TopBlack)	White

*Special Order only

VMAX Plus4 Series Dimensions Table

Model	Nominal Diagonal	Case Length (A)	View Width (A1)	Screen Width (A2)	Bracket Hole Distance (A3)	Overall Height w/Height Bracket (B)	View Height (B1)	Screen Edge (B2)	Bottom to top Distance (B3)	Weight bar material of end cap (B4)	Screen Width to end cap (C)	End Cap cord (C1)	Power Height length (C)	End Cap Height (D1)	Bracket Width (E)	Bracket (E1)
VMAX200XWS Plus4	200"(1:1)	3956	3592	3692	3791	4251	3592	3936	90	4063	15	127	2500	127	188	138
VMAX235XWS Plus4	235"(1:1)	4582	4221	4321	4417	4897	4221	4565	90	4705	18	140	2500	140	192	144
VMAX200XWV Plus4	200"(4:3)	4430	4064	4164	4265	3707	3048	3392	90	3519	15	127	2500	127	188	138
VMAX235XWV Plus4	235"(4:3)	5186	4775	4875	5021	4014	3581	3925	90	4065	18	140	2500	140	192	144
VMAX265XWV Plus4	265"(4:3)	5821	5384	5484	5656	4763	4039	4383	90	4548	20	165	2500	165	215	175
VMAX300XWV Plus4	300"(4:3)	6533	6096	6196	6368	5316	4572	4916	90	5091	20	175	2500	175	225	185
VMAX350XWV Plus4	350"(4:3)	7555	7112	7212	7390	6078	5334	5678	90	5853	20	175	2500	175	225	185
VMAX400XWV Plus4	400"(4:3)	8570	8128	8228	8345	7030	6096	6440	90	6700	25	260	2500	260	330	280
VMAX200XWH Plus4	200"(16:9)	4790	4428	4528	4625	3150	2491	2835	90	2962	15	127	2500	127	188	138
VMAX235XWH Plus4	235"(16:9)	5610	5203	5303	5445	3603	2927	3271	90	3411	18	140	2500	140	192	144
VMAX265XWH Plus4	265"(16:9)	6303	5867	5967	6138	4024	3300	3644	90	3809	20	165	2500	165	215	175
VMAX300XWH Plus4	300"(16:9)	7078	6641	6741	6913	4480	3736	4080	90	4255	20	175	2500	175	225	185
VMAX380XWH Plus4	380"(16:9)	8855	8413	8513	8630	5666	4732	5076	90	5336	25	260	2500	260	330	280

Unit: mm

Can't find size and ratio you're looking for? Visit elitescreens.com/csr to create your own

Model	Nominal Diagonal	Case Length (A)	View Width (A1)	Screen Width (A2)	Bracket Hole Distance (A3)	Overall Height w/Height Bracket (B)	View Height (B1)	Screen Edge (B2)	Bottom to top Distance (B3)	Weight bar material of end cap (B4)	Screen Width to end cap (C)	End Cap cord (C1)	Power Height length (C)	End Cap Height (D1)	Bracket Width (E)	Bracket (E1)
VMAX200XWS Plus4	200"(1:1)	155.7	141.4	145.4	149.3	167.4	141.4	155.0	3.5	160.0	0.6	5.0	98.4	5.0	7.4	5.4
VMAX235XWS Plus4	235"(1:1)	180.4	166.2	170.1	173.9	192.8	166.2	179.7	3.5	185.2	0.7	5.5	98.4	5.5	7.6	5.7
VMAX200XWV Plus4	200"(4:3)	174.4	160.0	163.9	167.9	145.9	120.0	133.5	3.5	138.5	0.6	5.0	98.4	5.0	7.4	5.4
VMAX235XWV Plus4	235"(4:3)	204.2	188.0	191.9	197.7	158.0	141.0	154.5	3.5	160.1	0.7	5.5	98.4	5.5	7.6	5.7
VMAX265XWV Plus4	265"(4:3)	229.2	212.0	215.9	222.7	187.5	159.0	172.5	3.5	179.0	0.8	6.5	98.4	6.5	8.5	6.9
VMAX300XWV Plus4	300"(4:3)	257.2	240.0	243.9	250.7	209.3	180.0	193.5	3.5	200.4	0.8	6.9	98.4	6.9	8.9	7.3
VMAX350XWV Plus4	350"(4:3)	297.4	280.0	283.9	290.9	239.3	210.0	223.5	3.5	230.4	0.8	6.9	98.4	6.9	8.9	7.3
VMAX400XWV Plus4	400"(4:3)	337.4	320.0	323.9	328.5	276.8	240.0	253.5	3.5	263.8	1.0	10.2	98.4	10.2	13.0	11.0
VMAX200XWH Plus4	200"(16:9)	188.6	174.3	178.3	182.1	124.0	98.1	111.6	3.5	116.6	0.6	5.0	98.4	5.0	7.4	5.4
VMAX235XWH Plus4	235"(16:9)	220.9	204.8	208.8	214.4	141.8	115.2	128.8	3.5	134.3	0.7	5.5	98.4	5.5	7.6	5.7
VMAX265XWH Plus4	265"(16:9)	248.1	231.0	234.9	241.7	158.4	129.9	143.5	3.5	150.0	0.8	6.5	98.4	6.5	8.5	6.9
VMAX300XWH Plus4	300"(16:9)	278.7	261.5	265.4	272.2	176.4	147.1	160.6	3.5	167.5	0.8	6.9	98.4	6.9	8.9	7.3
VMAX380XWH Plus4	380"(16:9)	348.6	331.2	335.2	339.8	223.1	186.3	199.9	3.5	210.1	1.0	10.2	98.4	10.2	13.0	11.0

Unit: mm

Can't find size and ratio you're looking for? Visit elitescreens.com/csr to create your own

Note: Data Error ±1". The listed measurements are for general reference only. Please contact Elite Screens to verify product design and dimensions before attempting to integrate its products with any structural or furniture modification. Although a manufacturer may offer product advice, it may be taken or disregarded at the integrator's discretion. Elite Screens will not be held responsible or be otherwise liable for faulty installations.

