

Impressive Audiovisual Performance with Smart Design



PJD7830HDL



The ViewSonic LightStream™ PJD7830HDL Full HD projector features 3,200 lumens, 22,000:1 contrast, native 1080p (1920 x 1080) resolution and a 1.1-1.5 throw ratio for larger screens from shorter distances. Flexible connectivity is lead by 2x HDMI which also offer support for optional Wi-Fi dongles. Best in class colour & sound performance are powered by an exclusive SuperColor™ 6-Segment Color Wheel and SonicExpert™ audio technology, whilst a hidden HDMI-MHL (Mobile High-Definition Link) compartment and rear cable cover complete a sleek design.



Full HD 1080p Delivers The Finest Picture Quality

This ViewSonic projector features Full HD 1080p (1920 x 1080) native resolution for the sharpest and clearest picture available. It is perfect for watching all types of personal high definition content including movies, videos, sports, games, and TV. HD is also now demanded in numerous business applications like finance, medical and design.



2x HDMI with 3D Support

Equipped with two HDMI ports, this projector is perfect for connecting to any HDMI-enabled device such as laptops, tablets, games consoles and DVD or Blu-ray players. It also supports 3D images directly from 3D sources.



Larger Screens from Shorter Distances

A shorter than normal throw ratio of 1.1 - 1.5 projects large images from reduced distances in small rooms. A 1.36x optical zoom lens also provides positioning flexibility by creating 26% larger screens without having to move the projector.



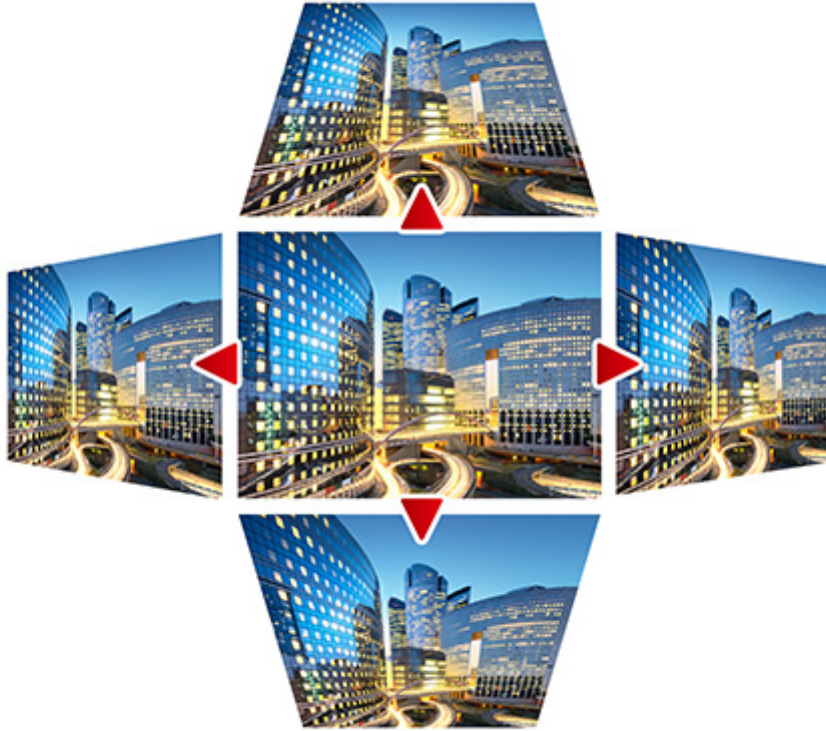
60"



5 feet
(1.5 meter)

Perfectly Shaped Images

Horizontal and vertical keystone correction and 4 corner adjustment features eliminate crooked and distorted images for a perfectly proportioned picture every time.



Optional Wireless (WiFi) Presentation

Convert your projector into a smart display and wirelessly transmit various kinds of business and entertainment material from Smartphones, tablets and computers (optional WPG-300 available from ViewSonic).



Beautiful Design with Rear Cable Cover

With its dot texture finish, curved edges and tactile keypad this LightStream Projector stands out from the competition. A concealed HDMI-MHL port and rear cable cover provides security and completes the look by hiding cable clutter and exposed ports.



SuperColor™ : Best in Class Color Accuracy

ViewSonic's proprietary SuperColor™ Technology offers a wider colour range than conventional DLP projectors for true-to-life color performance in any light. SuperColor™ 6-Segment Color Wheel maximizes brightness Increased by 15% or more with the highest color saturation over others in the same class.



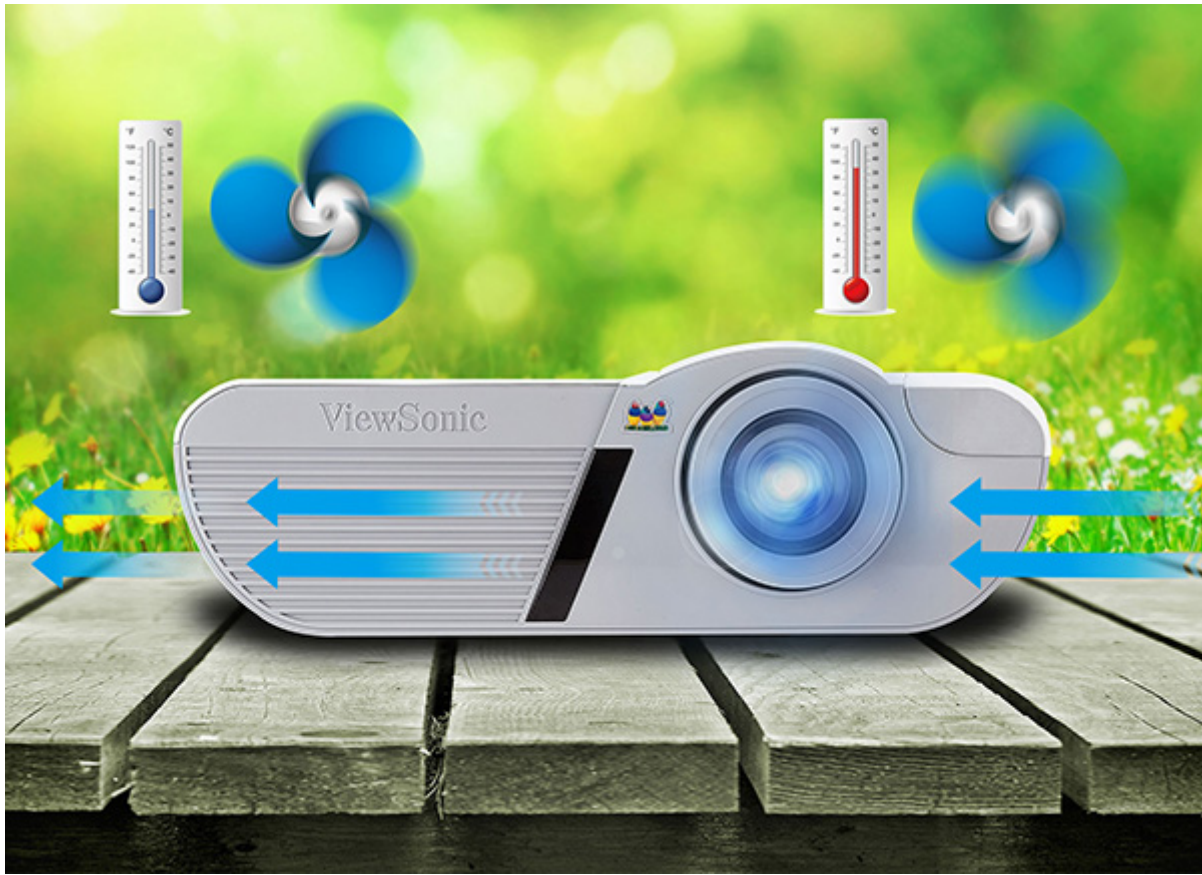
SonicExpert™ Technology For Best-in-Class Sound

ViewSonic's exclusive SonicExpert technology incorporates a ported speaker chamber and a more powerful amplifier to deliver up to 7x higher volume and the absolute best-in-class sound.



Quiet Operation

A built-in thermal sensor control system and large fan effectively keeps the projector cool while intelligently minimizing fan speed, reducing noise to as low as 28dB and saving on energy consumption.

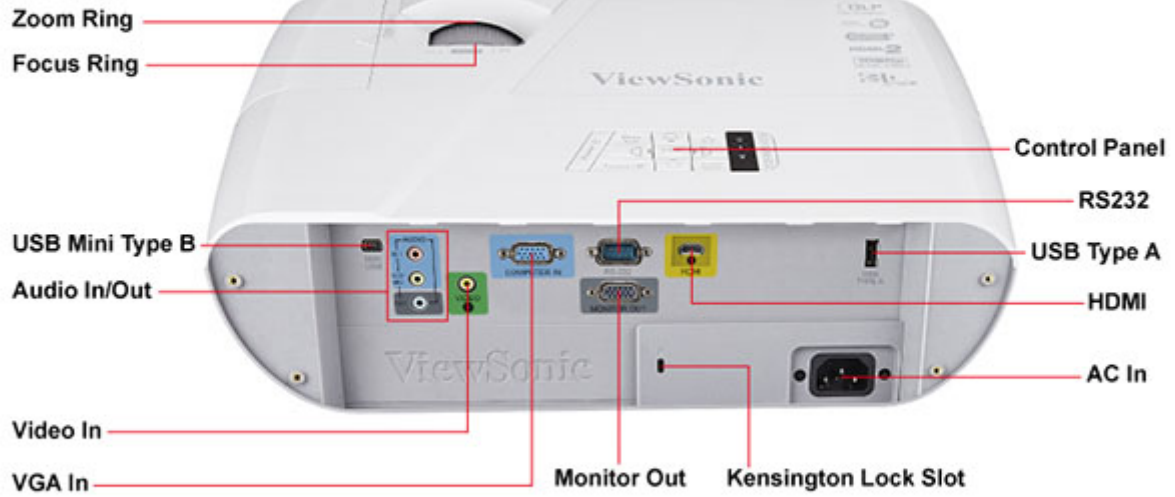
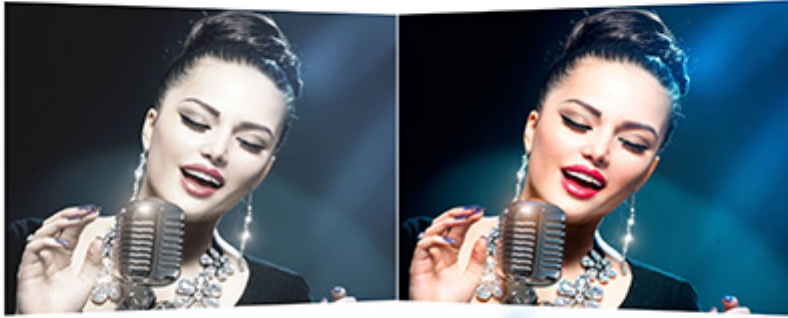


Easy-of-Use Pre-Set Colour Modes

Providing 5 pre-set colour modes, users can choose the best one to suit their material: Brightest, Dynamic, Standard, ViewMatch or Movie.

Normal

ViewMatch® Color Mode



Technical Specifications

Product

Specification	Resolution	HD 1080p (1920 x 1080)
	Brightness (ANSI Lumens)	3,200
	Contrast (with Dynamic Contrast Ratio)	22,000:1
	Lamp Hour (Normal / DynamicEco)	3,500 / 8,000
	Throw Ratio in Meters (Wide ~ Tele)	1.1 ~ 1.5
	Optical Zoom	1.36x
	Digital Zoom	2.0x
	Screen Size	30" ~ 300"
	Projection Offset	135% +/- 5%
	Display Colours	1.07 Billion Colours
	Keystone	+/- 30° (Horizontal & Vertical)
	Noise min (Normal / Eco)	32dB / 28dB
	Speaker	16W x 1

Input Connectivity

HDMI In	2 (1 is MHL)
VGA-in	1
Component Input	shared with VGA-in
S-Video	NA
Composite Input	NA
Audio-in (3.5mm)	2
Audio-in (RCA pair)	NA
USB Type A	1
USB Type B	NA
Mini USB	1 (Firmware, mouse control)
Microphone in (3.5mm)	1 (Share with audio in 2)
SD Card reader	NA

Output Connectivity

VGA-out	1
Audio-out (3.5mm)	1

Control

RS232 (9 pin)	1
Network Management (LAN cable)	NA
12V Power Trigger	NA

PC / Mac

Video/Audio Streaming	Yes (optional WPG-300)
-----------------------	------------------------

Extend/Mirror display	Yes (optional WPG-300)
4-in-1 Spilt screen	Yes (optional WPG-300)
1 to many projection	NA

iOS / Android	DOC file streaming (read only)	Yes (optional WPG-300)
	Live CAM	Yes (optional WPG-300)
	Live Draw	Yes (optional WPG-300)
	Cloud service (Drop box)	Yes (optional WPG-300)
	WiFi (single band or dual band)	Yes (optional WPG-300)
	Miracast	Yes (optional WPG-300)
	DLNA	NA
	Bridge to ethernet	NA
	Video/Media streaming	Yes (optional WPG-300)

Advanced Features	3D Compatible (optional PGD-350 3D glasses required)	Yes
	Interactive (optional PJ-PEN-003 required)	NA
	Low Power Standby	<0.5W
	3 sec. on / 0 sec. off	Yes
	Wireless Display	Optional (WPG-300)
	Network Control	NA
	Network Display	NA
	Auto Keystone	NA
	Microsoft Office Viewer	NA
	Sleep Timer	Yes
	Presentation Timer	Yes
	Password Protection	Yes
	Security Bar	Yes
	Keypad Lock	Yes
	Customized Start-up Screen	NA
	DynamicEco / Movie mode / Contrast	Yes / Yes / Yes

Dimensions and Power	Dimension (WxDxH)	362 x 231 x 109 mm
	Net Weight	2.8kgs
	Power Source	100V ~ 240V / 50~60Hz
	Power Consumption	315W (Max)

Supplied Accessories	Power cord	1
	VGA cable	1

HDMI cable	NA
Remote Control (with batteries)	1
Cable cover	1
Quick Start Guide & CD	Yes
Carry bag	NA

**Optional
Accessories**

PGD-350 (3D glasses x1)	Yes
PJ-PEN-003 (2x interactive pens and infrared module)	NA
PJ-WMK-401 (wall mount kit for Ultra Short Throw projectors)	NA
PJ-WPD-200 (USB WiFi dongle)	NA
WPG-300 (HDMI-MHL WiFi dongle)	Yes
WPD-100 (USB WiFi dongle)	NA
WPG-370 (wireless presentation box)	Yes

Languages

On Screen Display	English, French, Spanish, Thai, Korean, German, Italian, Russian, Swedish, Dutch, Polish, Czech, T-Chinese, S-Chinese, Japanese, Turkish Portuguese, Finnish, Indonesian, Indian, Arabic
-------------------	--

ViewSonic® Limited Warranty

ViewSonic provides customers with the security of a manufacturers warranty against defected products. The type and duration of the applicable warranty service varies by product type, country of purchase and can also vary on an individual basis according to customer requirements agreed at time of purchase. The warranty will expire after the end of the warranty period.

For more product information, visit us at **www.viewsoniceurope.com**

All rights reserved by ViewSonic Corporation. All other Corporate names and trademarks are the property of their respective companies. E&EO. All prices and specifications are subject to change without written notice. Images are for illustrative purpose only. Terms & Conditions Apply.